



**Circle of Albert Bierstadt (1830-1902)**

Portrait studies of ladies in local Italian costume, possibly from Nogara, in the Veneto  
one indistinctly inscribed 'Nogara'  
oil on canvas, presented in their original frames  
16 1/2 x 11 in. (41.4 x 28.1 cm.) a pair (2)



**Yves Ganne (French, 1931)**

Cherries and Pears.  
signed and dated 'Y.Ganne/58' (upper right); further  
signed and inscribed (on canvas verso), oil on canvas  
13 x 16 1/8 in. (33 x 41cm)



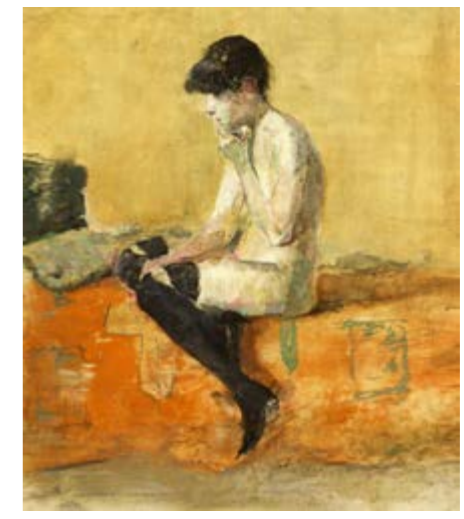
**John Northcote Nash, C.B.E., R.A. (1893-1977)**

In Brittany  
signed 'John Nash' (lower right)  
watercolour  
15 x 22 in. (37.5 x 55 cm.)  
PROVENANCE: with Thomas Agnew and Sons Ltd  
EXHIBITION: London, Royal Academy, John Nash Exhibition, September-October  
1967, No. 206 (as 'French Landscape')



**James Holland, OWS (1799-1870)**

Figures on the Beach at Lynmouth, Devon .  
signed 'J Holland' and inscribed 'Lynmouth / Augt., 23 '49 /  
2.0c N-W JH'  
watercolour  
12 x 20 in. (32 x 51 cm)  
PROVENANCE: with Spink, St James's, London, SW1



**Stephen Goddard (born 1959), after Henri de Toulouse Lautrec:**

Étude de Nu, Femme assise sur un Divan  
mixed media  
15 1/4 x 13 in. (38.5 x 33 cm.)



**(William) Michael Rothenstein, R.A. (1908-1993)**

The Scrap Yard, 1945  
signed 'Rothenstein' (upper right) and signed again 'Michael Rothenstein' (lower  
right)  
pencil, ink and watercolour  
11 1/4 x 16 1/4 in. (28.6 x 41.3 cm.)  
PROVENANCE: Peter Nahum, London  
EXHIBITION: *Farm, Field and Fantasy, Visions of the English Countryside from  
the 18th Century to the Present Day*, Bishop's Palace, Chichester, 1989, no.44.



**Charles-Francois Eustache (French 1820-1870)**

A group of 5 landscape views thought to be of the Orient and Brittany.

All oil on paper laid on canvas, of various sizes 10 ½ x 17 ¼ in. (26,5 x 44 cm.), and smaller.

PROVENANCE:

From the sale of the artist' estate.

EXHIBITION:

Charles- Francois Eustache

Jacques Fischer et Chantal Kiener Paris VIIème Arrondissement 1978 CT

(5)



**Joseph Farington, R.A. (1747-1821)**

Old London Bridge and the Monument from the South West  
signed I.I. on the edge of a sail, 'J Farington'

oil on canvas

35 ½ by 27 in. (90 x 69 cm.)

EXHIBITION:

Royal Academy, 1791, no 252

# JULIA KORNER

FINE ART

A British Miscellany with Foreign Intrusions



**Sir Robin Philipson RA PRSA FRSE RSW (1916-1922)**

The Circus

oil on panel

signed (verso)

14 ¼ x 18 ¼ in. (36 x 46 cm.)

[www.juliakorner.com](http://www.juliakorner.com)

[julia@juliakorner.com](mailto:julia@juliakorner.com)

+44 (0)7771 713 980